



Welcome to Steel Bits Ltd

Steel Bits Ltd is a small design company manufacturing useful magnetic site programming boards for the construction industry to include, Site Programming, Traffic Management, Hazard Information and many more.

We also offer bespoke dry wipe, white board board designs, to suit individual requirements, for internal or external use.

Our aim is to provide you with our most up to date safety products that we have designed specifically to suit the current needs of the building and construction industry.

With more than 30 years experience in this industry, we understand the needs of our customers and are constantly thinking of new and innovative products to make the building and construction industry not only safer but smarter.

This includes Stairwell Protection, Generator Spill Trays, Ladder tie Supports, Tool Charging Nest Lockers, Blade Safe with more items being designed and manufactured all of the time.

We encourage you to visit our website often and check back with us as we release more products, that will not only make your job easier, but keep your employees safer.

If you have any questions about any of our products or services please do not hesitate to contact us at:



www.steelbits.co.uk



uk.linkedin.com/in/steel-bits-ltd-ali-steel-62313b48



www.facebook.com/Steel-Bits-Limited



MAGNETIC 4 WEEK SITE PROGRAMME BOARDS

MAGNETIC 4 WEEK PROGRAMME BOARD

Steel Bits Magnetic 4 week programme boards are designed to circulate information between contractors and sub-contractors.

By design, it is easy to use, easy to update and easy to understand, making it a really useful tool to keep on top of a busy site.

The board itself is a dry wipe graphic overlay on a 1200mm x 900mm magnetic white board and it comes as standard with, 600 descriptive magnets as shown, chosen from a pdf sample sheet emailed through following an inquiry.

The magnets come in a plastic storage box, similar to the one shown which has a company logo on the lid.

The picture below shows a board in use, which allows the men on the ground a chance to see the programme each day when they sign in and inform the management of completion times.

All magnets are standard sizes to fit a 4 week site programme, From design, to manufacture, all we will require from you is: Your magnet description, colour, design and individual quantities, by completing a simple spread sheet we will email to you and your company logo.

Email: **sales@steelbits.co.uk**, to order your 4 week programme board , giving the full site name and address, site contact number and an authorised Purchase Order from your office.

Ordering product code: **4WP**

[illegible]

TOOL CHARGING LOCKERS

240v, ideal for locking valuable work batteries / tools whilst charging on site.

Lost tools mean delays with construction programme and financial losses for workmen.

Each compartment comes with a hasp and staple locker, to receive a padlock (not supplied).

Power Tool Charging Locker will recharge and store power tools securely on site.

Complete with 4 Lockable compartments (Hasp & Staple, Padlocks not included).

Tested to BS 6396:2008 CE

Each compartment includes one 13 amp UK 3 pin socket

Plug in mains at rear using a IEC-C13

(Kettle/PC style) lead

Designed to operate at 230/250 volts - Max load 13 amps

Conforms to Regulations Tested to

BS 6396:2008

External Height (mm) 1780

External Width (mm) 380

External Depth (mm) 525 Compartment Internal Height (mm)

380 Compartment Internal Width (mm) 316 Compartment

Internal Depth (mm) 460 Product Weight (kg) 27

Manufacturer's Warranty 1 year

Ordering product code:

CHG-LOCK

Normal Delivery 20-25 business days.



TOOL CHARGING LOCKERS

240v, ideal for locking valuable work batteries / tools whilst charging on site.

Lost tools mean delays with construction programme and financial losses for workmen.

Each compartment comes with a hasp and staple locker, to receive a padlock (not supplied).

Power Tool Charging Locker will recharge and store power tools securely on site.

Complete with 4 Lockable compartments (Hasp & Staple, Padlocks not included).

Tested to BS 6396:2008 CE

Each compartment includes one 13 amp UK 3 pin socket Plug in mains at rear using a IEC-C13

(Kettle/PC style) lead

Designed to operate at 230/250 volts - Max load 13 amps

Conforms to Regulations Tested to BS 6396:2008

External Height (mm) 1780

External Width (mm) 380

External Depth (mm) 525 Compartment Internal Height (mm)

380 Compartment Internal Width (mm) 316 Compartment

Internal Depth (mm) 460 Product Weight (kg) 27

Manufacturer's Warranty 1 year

Ordering product code:

CHG-LOCK

Normal Delivery 20-25 business days.



CUSTOMER CARE DOCUMENTATION

This board can come as a 600mm x 900mm, as shown, or can be enlarged to a 900mmx1200mm

Bespoke designs available.

Ordering product code:

CC-DOC-6090 for the 600mm x 900mm

CC-DOC-90120 for the 900mm x 1200mm

[illegible]

E-FAB

A first-aid bag that fits unobtrusively inside your hard hat. Always accessible and available in an instant.

The Emergency First-Aid Bag (E-FAB) was originally designed for the offshore and construction industries where safety is paramount.

E-FAB safeguards workers no matter the situation: high-risk, remote or dangerous.

Once installed in your hard hat you will always have first-aid within reach in case of emergency.

Ordering Product Code: **E-FAB**

CONTENTS STANDARD PACK

- 1 Triangular bandage
- 2 Leukostrip 6.4mm × 76mm ×
- 3 Steroplast 7.0cm × 6.0cm
- 4 Steropad 7.5cm × 7.5cm
- 5 Steropad 5.0cm × 5.0cm
- 6 Plaster 4.0cm × 4.0cm
- 7 Plaster 7.5cm × 2.5cm
- 8 Plaster 7.5cm × 5.0cm
- 9 Burn bag
- 10 Burn gel 3.5ml
- 11 Virtex latex free gloves
- 12 Alcohol wipes × 2
- 13 Resuscitation mask



FIRE SAFETY DOCUMENTS BOX & FOLDER

This Metal Fire Document Cabinet has a red powder coated finish, a hasp and staple lock (padlock not included), The box is made to fix on the entrance to the site compound, it has a hasp and staple lock, so that you can fit a padlock, making it easy for the emergency services to cut off in an emergency to access important information regarding flammable materials.

The folder comes with an index and dividers, allowing you to store important information regarding flammable items stored within the site storage containers, offices, fuel tanks, plus an evacuation plan, showing all areas of the working site.

Cabinet Dimensions: H370mm by W300mm by D140mm

Ordering product code: **FIRE-DOC**



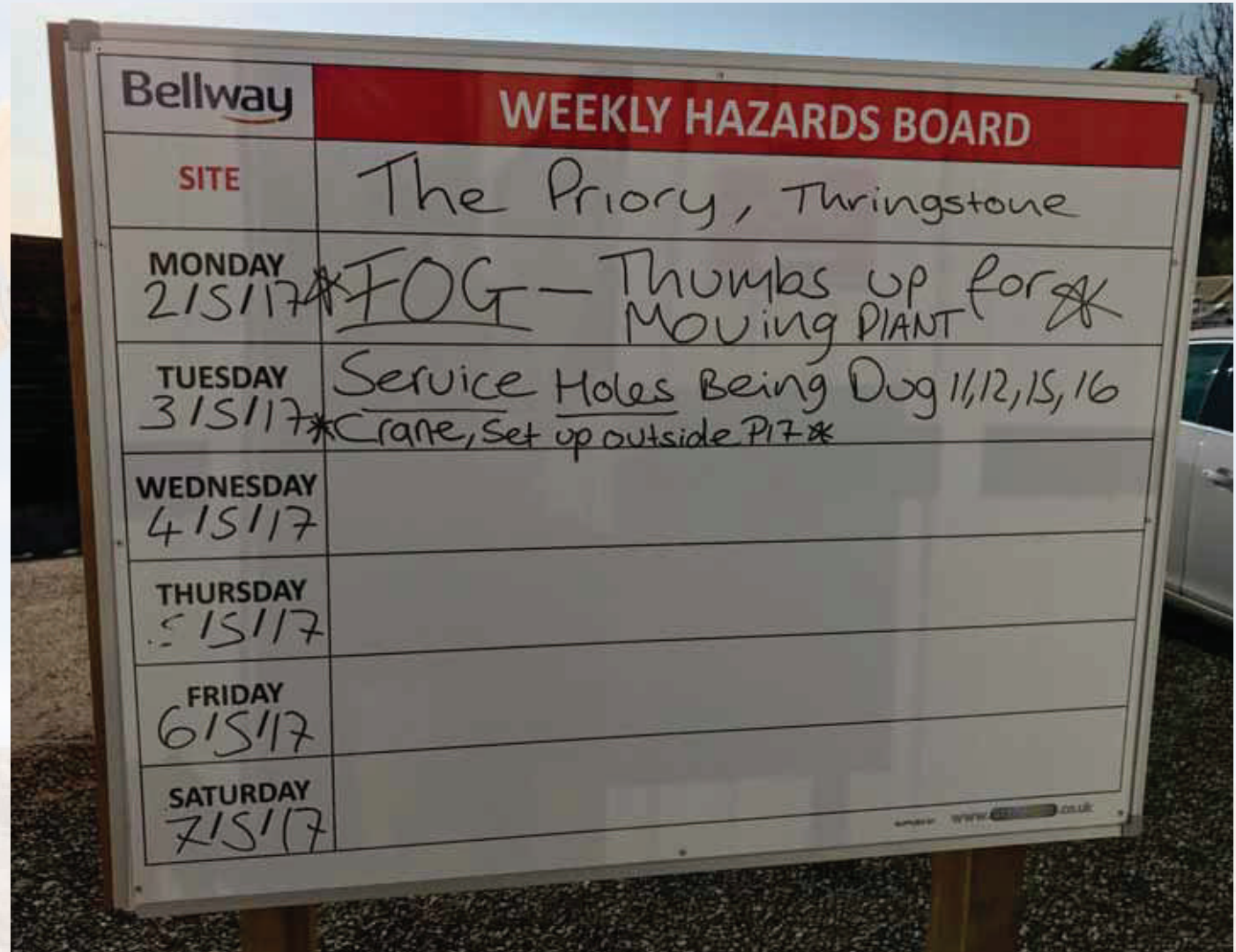
WEEKLY HAZARDS BOARD

This board can come as a 1200mm x 900mm

Bespoke designs available.

Ordering product code:

WHAZ-90120 for the 900mm x 1200mm



This Hot Works Board, has a clear plastic pocket, designed to take an A4 size Hot Works Permit, it contains a battery powered smoke detector and a 600gm power fire extinguisher and is easy to carry for use whilst working.

Hot-work permits are required for any operation involving open flames or producing heat and/or sparks and must be prepared by a competent person. Hot works include brazing, torch cutting, grinding, soldering and welding.

Ordering Product Code:
HOT-WORK



Signs of a good night out?
Or carbon monoxide poisoning?

The Carbon Monoxide Board is for use when working in confined areas, with gas fired bin heaters or areas with smoke and fuel fumes.

Carbon Monoxide is a colourless, odorless toxic gas, produced from incomplete combustion of gas, oil, fuel or wood.

Symptoms from carbon monoxide poisoning may cause:

Headaches, Dizziness, Nausea, Breathlessness, Collapse or loss of consciousness.

The alarm must be tested daily

HEADACHES

NAUSEA

BREATHLESSNESS

Ordering Product Code: **CBN-MX**

COLLAPSE

DIZZINESS

LOSS OF CONSCIOUSNESS

WARNING

CARBON MONOXIDE

is a colourless, odorless toxic gas, produced from incomplete combustion of gas, oil, fuel, or wood.

SYMPTOMS MAY CAUSE:

Headache, Dizziness, Nausea, Breathlessness, Collapse, or loss of Consciousness

What to do if you have these symptoms:

Open windows and doors.
Turn off fuel burning appliances.
Check that your work colleagues are ok and leave the building.
Seek medical attention.

What to do if someone else has these symptoms:

Quickly help the victim out into fresh air.
Shout for help.
Call 999.
Administer oxygen.
Start CPR if unconscious.

TEST THIS ALARM DAILY BEFORE USE



IF YOU HEAR THIS CARBON MONOXIDE MONITOR ALARM, SLOWLY LEAVE THE BUILDING, CHECKING THAT YOUR WORK COLLEAGUES ARE NOT LEFT BEHIND, TURN OFF ANY GAS APPLIANCES AND RAISE THE ALARM

Supplied by: www.steelbits.co.uk

LADDER SANITISER STATIONS

Our scaffold mounted hand sanitiser stations have been manufactured to be placed at the bottom and top of the ladder, by fixing to the scaffold tubes, so that trades can keep their hands clean and free of germs, whilst working.

Several trades may use the same ladder during the working day, so to help stop the spread of germs, a quick hand wash before you access the ladder to ascend or descend, will help prevent kill any germs.

You must make sure that the alcohol sanitiser has completely evaporated from your hands, before to access the ladder, so that your hands do not slip.



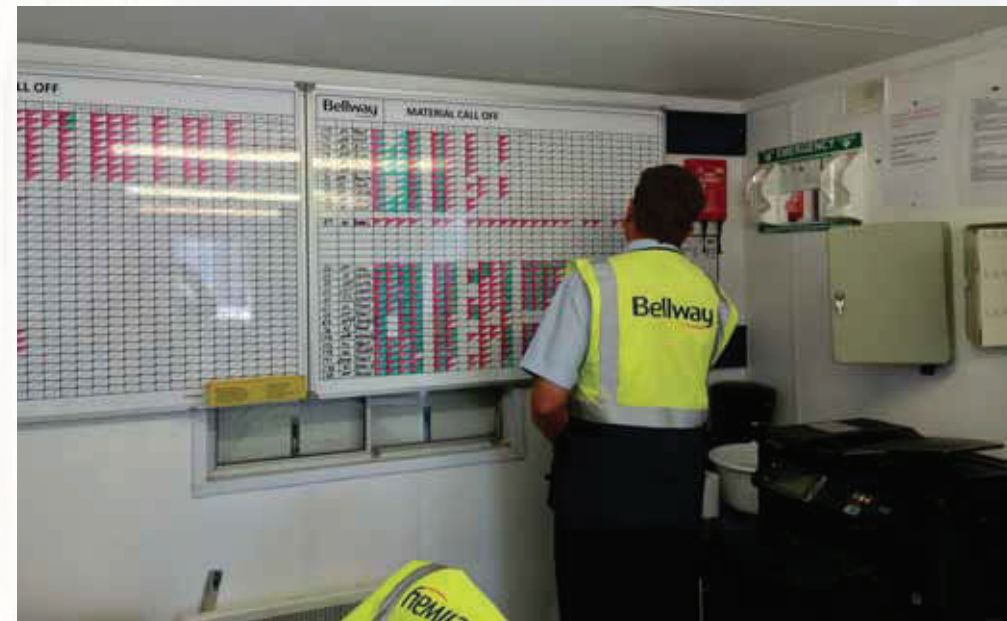
MATERIAL CALL OFF BOARDS

We have been asked to design white boards to standardize offices in regions, with the material call off board being a fairly new addition.

We have getting great feedback from its simple to use format, but with the ability to amend as necessary. The description headers can be left blank, or text can be added to suit on larger orders, which ever suits.

Ordering product code:

MATCOF



Ordering product code:

OHAS

OCCUPATIONAL HEALTH & SAFETY HAZARDS ON CONSTRUCTION SITES

Our newly developed Occupational Health & Safety site board, has relevant information for construction workers on the following subjects.

- 1 - Musculoskeletal Disorders
- 2 - Respiratory Disease.
- 3 - Skin Disease
- 4 - Noise at Work
- 5 - Vibration

The board is delivered in 5 sections, for protection during transportation. It comes with 5 weather proof, A4 leaflet holders clearly marked with information for downloading the leaflets from our website, via a web link, or QR code.

Leaflets are not supplied with the board, you can download by visiting, www.steelbits.co.uk, or scanning the QR code on the leaflet holders.

The sign board is not a dry wipe board, no additional information must be added and only warm soapy water and a soft cloth must be used to clean.

The board is designed to be screw fixed to a piece of 18mm plywood, for best results, due to its 2400mm x 1150mm size.



PHONE ZONE SIGNS

A series of A3 signs for site, coming in packs of 12

Each sign is overlaid on a correx board, easily fixed with cable ties or screws and washers, not supplied..

Ordering product code:

PHONE-ZONE



CAVITY CLEAR

With an strong emphasis on quality in construction, keeping cavities clean is one continuing problem.

Help to keep cavities clean with minimal effort, our 3 piece Cavity Clear, comprising of a Mortar Pick, to chip away stubborn debris, a Box Scoop, to collect and lift out the debris and a Mortar Scraper to drag the debris into the scoop.

Ordering product code:

CAVITY CLEAR-3PC



GENERATOR DRIP TRAYS

Our generator drip trays are made from light weight steel sheet with a yellow powder coated finish for a very ridged construction. The approximate overall size for transporting is, L 700mm x W 550mm x H 100mm.

The approximate internal floor size to fit your generator is, L 640mm x W 500mm x H 100mm.

Each tray is fitted with an internal depth gauge, to highlight the size or quantity of spill absorbent materials required to clean up any spills that may occur.

A maximum level is identified, so be sure to check that your generator does not exceed the 16 Liters maximum containment, which would be approximately 14 liters, remembering the tank size, plus 10% rule!!!!

The top edge of the tray is folded over to minimize the risk of sharp edges.

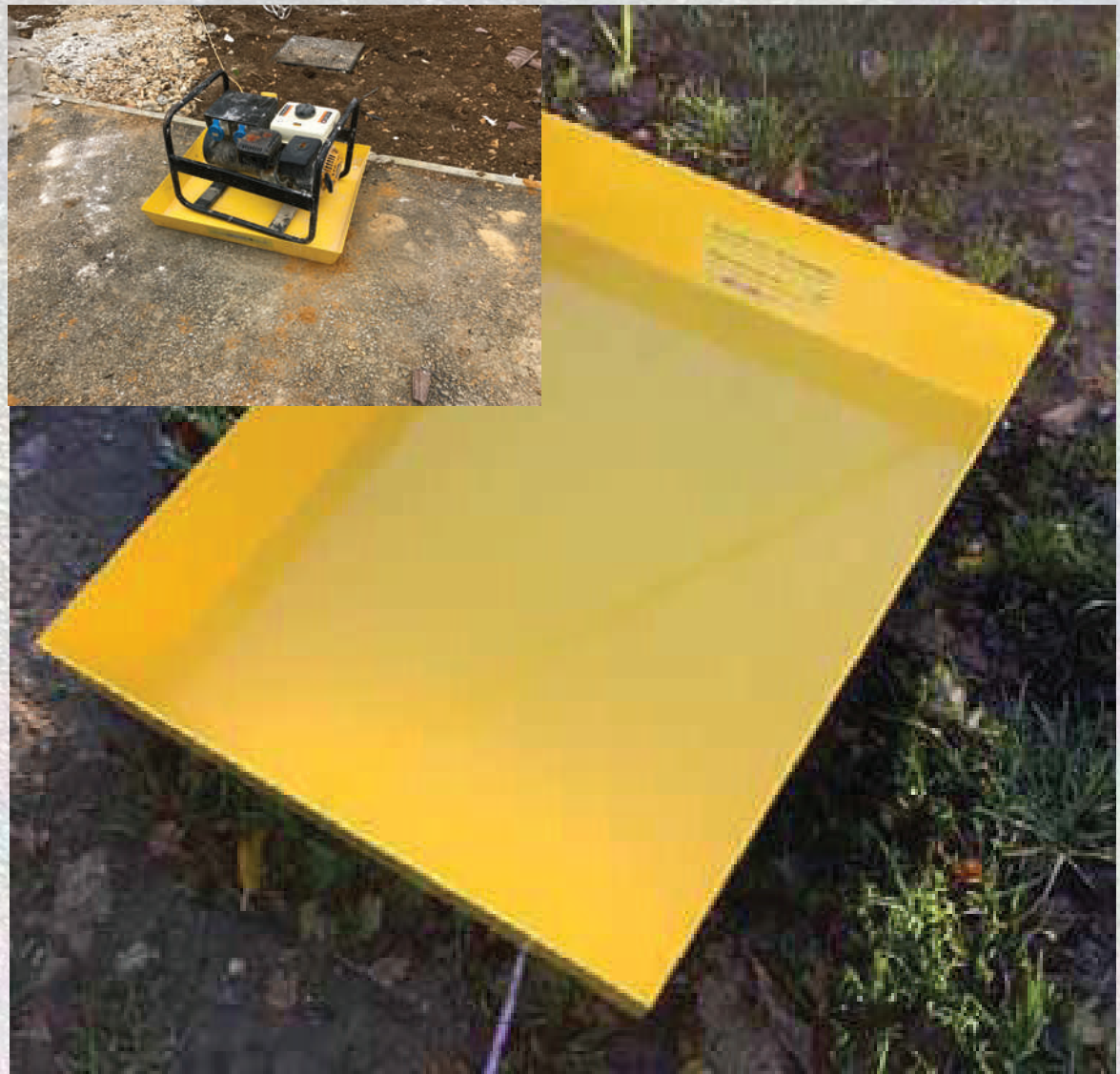
All corners are welded firm for a safe seal and strength.

As with all tools, we advise daily inspections prior to use.

You must always use the correct fuel can, with a purpose made funnel when refueling your generator and the fuel can must also be safeguarded against leaks.

Ordering product code:

DRIP-TRAY



Plasterboard Loading Hatch

Many of the houses today have small, awkward stairwells, making it very difficult to load in Plasterboards safely and efficiently. Our new loading Hatch has been made with the operative in mind, the slot is 60mm wide and 1300mm wide, allowing plasterboards and ridged insulation to be loaded through, it has a sloped leading edge, so boards can easily be directed to the slot, whilst being narrow enough to limit the risk of a foot slipping through.

The chequer plate lid is strong and easily closed or opened and for safety it's clearly marked "CAUTION", to show when it is open. There are 6 fixing holes around the perimeter of the angled frame, to allow the hatch to be fixed securely to the flooring.



Ordering Product Code: **PBL-HATCH**



Static Wrap is a clear polythene roll statically charged on 1 side for easy, multi-purpose covering within the construction industry (the inner surface as folded on the roll has the static charge). Ideal for covering up kitchen units, sinks and toilets, following build clean on new houses, with no need for masking tapes to hold in place. The static polythene attracts dust, so keeps the previously clean items from becoming covered in dust, saving further cleaning. No need to use masking tape to hold coverings on, saving extra cleaning and protecting the customer's belongings before they move in. Great for maintenance work, customer care & covering home owner's belongings whilst repair works are carried out. Attracts atmospheric dust by design. 135 meters in length, 4 meters wide 540m2 per roll.

Ordering product code:
STWRP

Ordering product code:

STENCIL

STENCILS

The stencils are around 150mm in height and 650mm in length and made from a 3mm composite material, so fairly robust if looked after.

Bespoke stencils can be made, but set up cost apply, depending on how many are ordered.

Prices are based on quantities and size, so basically, the more we can fit on one sheet, the cheaper it becomes.

ELECTRIC

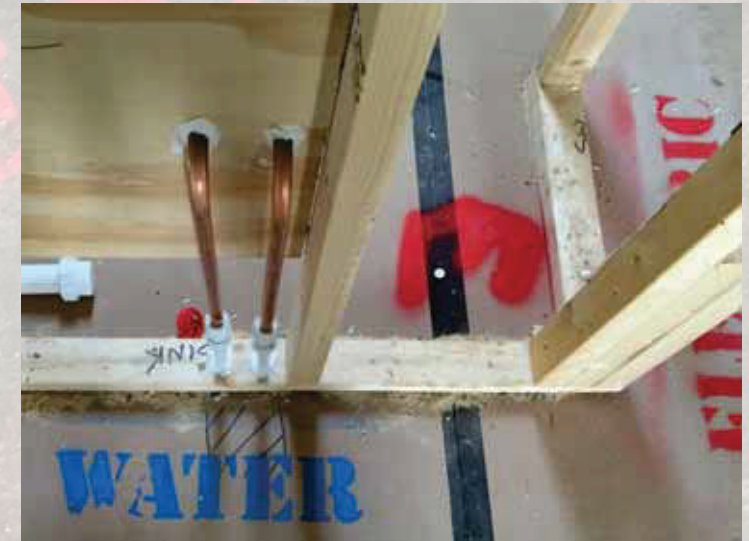
GAS →

SOLID DAB

WATER ●

BT **SVP**

CAUTION



These hard wearing, anti slip threshold protectors, are made to take the everyday grind of foot traffic in construction.

These are made to measure to suit the requirements of the customer, due to the varying sizes of door thresholds.

They are made from an easy peel material, which allows it to be stuck in place for up to 3 months, giving protection through various build stages, helping to eliminate customer complaints and costly returns.

Ordering Product Code: THD-PRO



TRAFFIC MANAGEMENT PLANS

From design, to manufacture, all we will require is:

A clear black and white pdf site copy plan showing site entrance from the main highway internal site roads, plots and plot numbers the less detail the better for viewing on site.

Whilst we do need an original fully layered site outlay, it's always useful to have a scanned copy, showing areas to be cropped.

We need the development name and address and high resolution copy of your company logo.

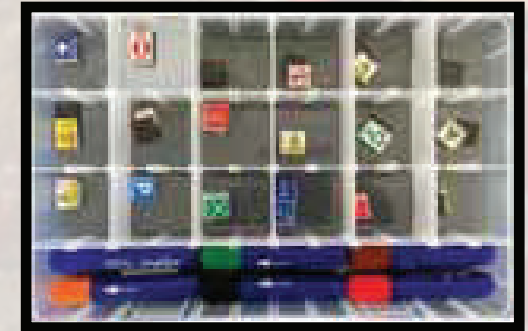
The whole package for each site board comes with:

- 1 - Dry-wipe TMP seal over galv board 1200mm x 900mm
- 2 - Six assorted dry-wipe pens, As Follows: Black – Blue – Brown – Red – Orange – Green
- 1 - Clear storage box.

60-Magnetic information pieces 15mm x 15mm, as follows:

- 2 no: Site Office / First Aid / Compound
- 3 no: Fire Assembly Point
- 3 no: Fire Equipment Point
- 3 no: Materials Delivery Area
- 4 no: Materials Storage Area
- 2 no: Recycling Area
- 4 no: Vehicle Reversing In This Area
- 2 no: Warning Bucket Changing In This Area
- 5 no: Speed Limit
- 6 no: No Traffic Entry
- 3 no: Traffic Officer
- 5 no: One Way
- 3 no: Deep Excavations
- 2 no: Silo Area

Ordering product code: **TMP**



NEAR MISS BOARDS

This board comes as a 1180mm x 600mm and it is supplied with a red locking document letter box, for inserting completed forms, plus a document pocket for blank forms (forms not supplied)

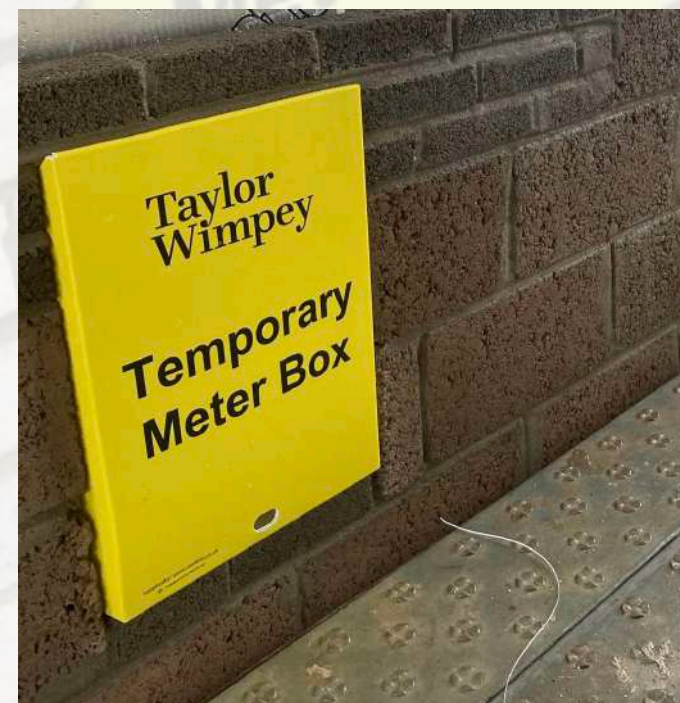
Ordering product code: **NEARMISS-1180600**





Temporary Meter Box

Made to sit in place until the meter box is fitted, saving unnecessary damage caused by ongoing works. The blanks are made to fold into the shape of the aperture and secure by taping the corners. We currently offer 2 sizes, 535mm x 375mm and 745mm x 245mm, with customer logo, bespoke sizes can be made. When not in use, simply remove the tape from each corner and flat pack for easy storage.



Contact: sales@steelbits.co.uk for more information and orders.

We now offer a range of identification tapes for use at pre-plaster stage, helping with operative awareness and quality.

Loft Hatch Tape



Moisture Board Tape



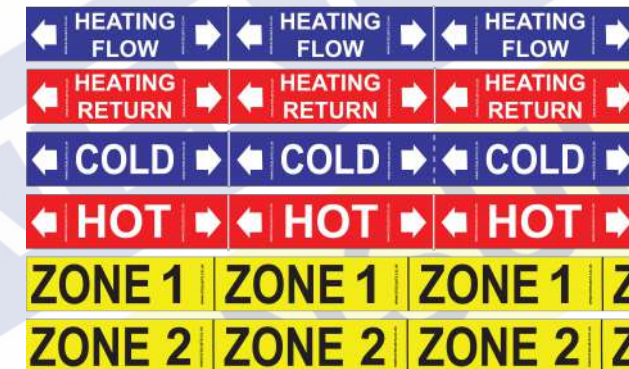
Clean Socket Tape



Double Board Tape



Insulation Tape



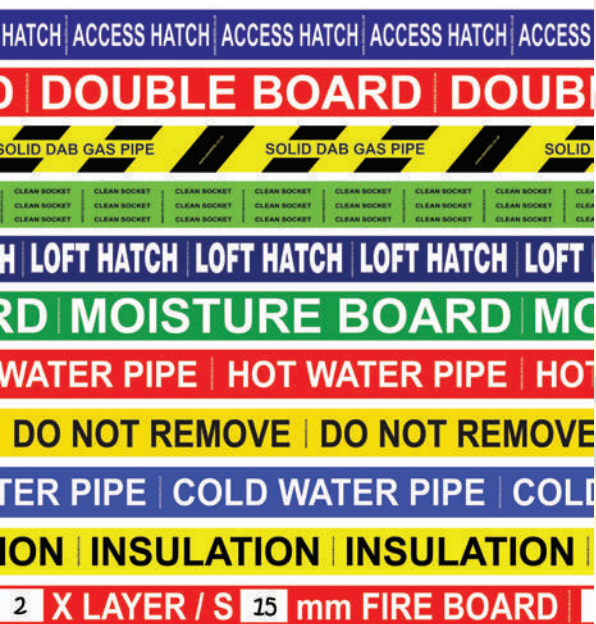
Bespoke tapes can be manufactured, to the clients specification, minimum 72 rolls per order, plus a small set up charge.

Contact: sales@steelbits.co.uk for more information and orders.

STEEL BITS

IDENTIFICATION TAPES

Taylor Wimpey Bellway BOVIS Ashberry
BARRATT HOMES Linden E.J. TAYLOR & SONS LIMITED Crest
DAVID WILSON HOMES MORRIS Martin Grant Homes
Bovis Homes DAVID WILSON HOMES REDROW HOMES



BLADE SAFE

Blade Safe – is a used utility blade, safe disposal system, incorporating practice methodology designed to deliver safe management of used blades within construction and other industries.

Steel Bits Ltd have worked together with a UK based manufacturer, to come up with a safe means of disposing of used utility knife blades, within the manufacturing and construction industry or even private DIY, allowing the filled container to be disposed of safely in metal recycling skips.

The Blade Safe container and its contents are 100% recyclable and it is also 100% manufactured in the UK.

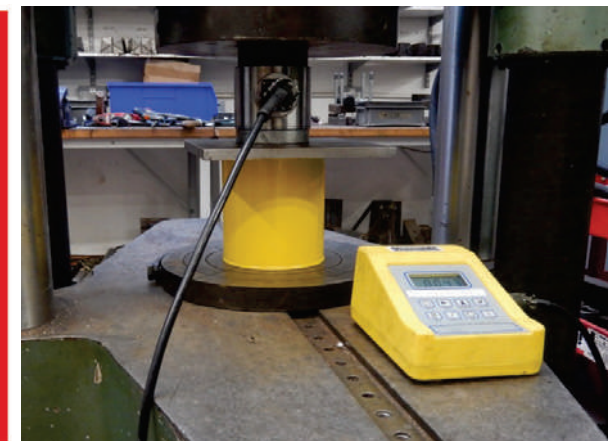
We've been working hard to improve and maintain the highest standards for our Blade Safe containers and this standard includes more rigorous testing for penetration, resistance to damage and leakage if the container is dropped. We are proud to boast that our Blade Safe container has been crush load tested axially, by means of flat pattern top and bottom to a load of 10.49kN (1 069.68 kilograms force or 1.07 tonnes-force)

Safe and secure Blade Safe disposal is vital to eliminate the risks that come with handling and managing used blade waste within manufacturing & construction industry and it is imperative that your business tries to help wherever it can, by knowing where used utility knife blades are at all times.

We can supply you with all of the Blade Safe containers that you need and we supply safety literature and site signage within the packs supplied.

Incorrectly controlled used utility blades can pose a serious health risk to anyone if not disposed of correctly, working up through newly laid turf on customer's gardens, hidden in waste in skips on sites, the list is endless.

Ordering product code: **BLADE-SAFE-SITE-PACK**



The Blade Safe has been design with a limited access slot punched into the top of the container, to fit a blade measuring 60mm in length, allowing the sharp edge of the blade to be inserted fist, this allows the operator to safely insert the used blade, without fear of injury, also ensuring that only appropriate sized blades can be placed inside, so discouraging the use of Blade Safe containers for non-appropriate waste. The narrow aperture also makes it safer to use in areas where the public may be present and the limited access slot is also designed, to reduce and used blade spillage when in use



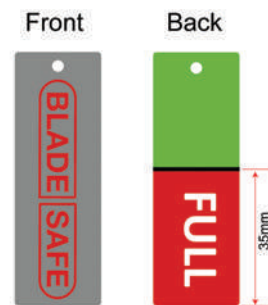
Site Pack

Each site pack comes with:

- 6 x 1ltr Blade Safe containers
- 6 x Dome container seal tabs
- 2 x A3 User guide posters for offices and canteens
- 2 x Site signs (THIS IS A BLADE SAFE SITE)
- 2 x Keyring depth check guides

Ordering product code:
BLADE-SAFE-SITE-PACK

The Site pack will come with 2 depth gauge keyring's, for ease of assessing what room is left within each container.



When the Blade Safe is full, make sure the top of the container is dirt free, peel off the protective layer from the back of one of the reinforced slot cover stickers supplied and apply over the slot. This will help ensure that no spillage occurs during transportation.



Tanglemat Protection - PVC

- Free-draining reversible matting for safety in wet areas.
- Soft vinyl loops for comfort.
- Suitable for most applications.
- Overall height 12mm.
- Low profile style mat.
- Suitable for external and internal use.
- Flexible—can be used as surface protection.
- Tanglemat can be sold as one complete roll 12m x 1.2m
- Individual mats can be cut



Contact: sales@steelbits.co.uk for more information and orders.